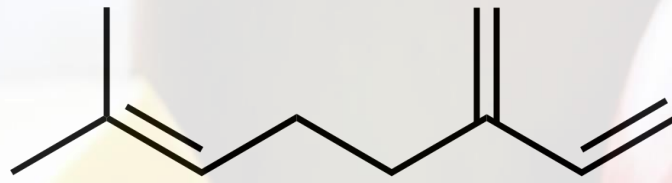




## **Terpene Reference Guide**



# Beta-Myrcene

(Boiling Point 334 °F)

Beta-Myrcene is the most common terpene in cannabis, and it is also found in hops, eucalyptus, mango, bay leaves, and lemongrass. Its aroma has been described as “herbal, balsamic, rooty, or spicy.”

## Medicinal Effects

- Relieves Pain
- Reduces Inflammation
- Relaxes Muscles
- Sleep Aid

# Strains we carry

## Flower

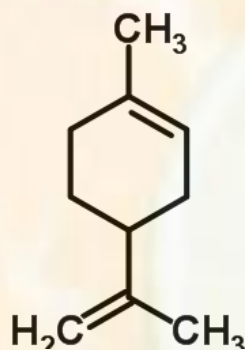
- 707 Headband - 0.58%
- #1024 - 0.40%
- Gobstopper - 0.34%
- Purple Thai - 0.32%
- Ghost OG x Blue Dream - 0.31%
- Cherry Stomper - 0.28%
- Gorilla Glue - 0.27%
- Sour Kush - 0.26%
- Tangerine Haze - 0.18%
- Ghost OG x Flo - 0.17%
- Chi Haze - 0.15%
- Starry Night - 0.14%
- Harlequin - 0.13%
- Girl Scout Cookies - 0.07%
- Las Vegas Purple Kush - 0.07%

## Concentrate

- Ghost OG x Blue Dream Shatter - 1.06%
- 707 Headband Shatter - 0.40%
- Tangerine Haze Live Resin - 0.26%
- Girl Scout Cookies Absolute Shatter - 0.09%

## Cartridge

- Sweet Dreams - 0.98%
- Blissful Berry - 0.81%
- Autumn Maple - 0.75%
- Uplifting Spearmint - 0.65%
- Citrus Anytime - 0.47%
- Caramel Apple - 0.02%



# Limonene

(Boiling Point 349 °F)

Limonene is the second-most-common terpene in cannabis. The aroma is found in citrus plants and is commonly used in lemony-fresh cleaning solvents and natural insect repellents. Limonene fights tumors and bacterial infections, stimulates the immune system, relieves depression and anxiety, and treats gastric reflux and ulcers.

## Medicinal Effects

- Fights tumors
- Fights bacterial infections
- Stimulates immune system
- Relieves depression
- Relieves anxiety
- Treats gastric reflux
- Treats ulcers

# Strains we carry

## Flower

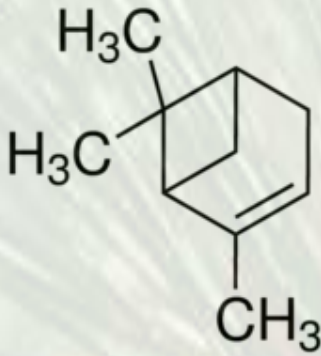
- Purple Thai - 0.59%
- Ghost OG x Flo - 0.44%
- Chi Haze - 0.36%
- Gorilla Glue - 0.29%
- Starry Night - 0.28%
- Gobstopper - 0.28%
- Sour Kush - 0.15%
- Girl Scout Cookies - 0.14%
- Las Vegas Purple Kush - 0.13%
- #1024 - 0.13%
- 707 Headband - 0.11%
- Tangerine Haze - 0.11%
- Ghost OG x Blue Dream - 0.07%
- Cherry Stomper - 0.06%

## Concentrate

- Ghost Flo x Absolute Shatter - 0.98%
- Ghost OG x Blue Dream Shatter - 0.25%
- Tangerine Haze Live Resin - 0.19%
- 707 Headband Shatter - 0.11%
- Girl Scout Cookies Absolute Shatter - 0.10%
- 707 Headband Wax - 0.08%

## Cartridge

- Citrus Anytime - 1.5%
- Uplifting Spearmint - 0.84%
- Blissful Berry - 0.70%
- Caramel Apple - 0.59%
- Sweet Dreams - 0.39%
- Autumn Maple - 0.09%



# Alpha-pinene

(Boiling Point 311 °F)

As you might guess from the name, this compound is commonly found in pine trees and other coniferous plants. It helps dilate the bronchial tubes, reduce inflammation, kill bacteria, and increase's cognitive function.

## Medicinal Effects

- Helps Dilate bronchial tubes
- Reduces inflammation
- Kills bacteria
- Increases cognitive function



# Strains we carry

## Flower

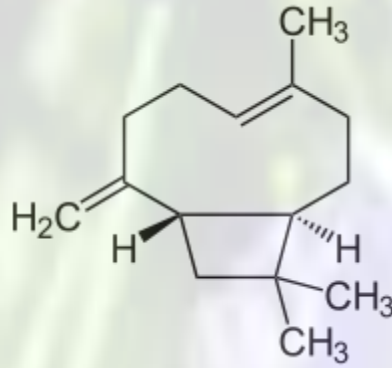
- Sour Kush - 0.89%
- Blue Dream - 0.51%
- Double OG Tang - 0.17%
- Purple Thai - 0.17%
- #1024 - 0.14%
- Ghost OG x Blue Dream - 0.12%
- Ghost OG x Flo - 0.08%
- Tangerine Haze - 0.06%
- Chi Haze - 0.06%
- Starry Night - 0.05%
- Gobstopper - 0.04%
- Gorilla Glue - 0.04%
- Harlequin - 0.03%

## Concentrate

- Ghost OG x Blue Dream Shatter - 0.52%
- Tangerine Haze Live Resin - 0.07%
- Ghost Flo x Absolute Shatter - 0.07%
- Girl Scout Cookies Absolute Shatter - 0.03%
- 707 Headband Shatter - 0.03%

## Cartridge

- Sweet Dreams - 6.9%
- Citrus Anytime - 1.1%
- Uplifting Spearmint - 0.68%
- Blissful Berry - 0.14%



# Beta-Caryophyllene

(Boiling Point 320 °F)

This terpene gives clove and black pepper their rich smell and taste. Like many cannabinoids, beta-caryophyllene binds to the CB2 receptor, found mostly in the immune system. Beta-caryophyllene is antibacterial and antiseptic, and it eases inflammation, nerve pain, ulcers, and depression.

## Medicinal Effects

- Antibacterial
- Antiseptic
- Eases inflammation
- Reduces nerve pain
- Treats ulcers
- Helps with depression



# Strains we carry

## Flower

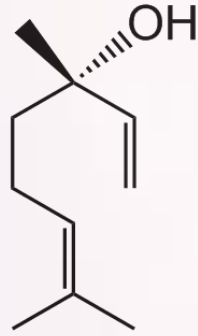
- Harlequin - 0.57%
- Double OG Tang - 0.41%
- Gorilla Glue - 0.39%
- Las Vegas Purple Kush - 0.32%
- Purple Thai - 0.24%
- Girl Scout Cookies - 0.24%
- Gobstopper - 0.12%
- Starry Night - 0.10%
- Chi Haze - 0.10%
- 707 Headband - 0.08%
- Ghost OG x Flo - 0.08%
- Tangerine Haze - 0.07%
- #1024 - 0.06%
- Sour Kush - 0.04%
- Ghost OG x Blue Dream - 0.03%
- Cherry Stomper - 0.02%

## Concentrate

- Girl Scout Cookies Shatter - 0.93%
- Ghost Flo x Absolute Shatter - 0.60%
- 707 Headband Shatter - 0.40%
- Tangerine Haze Live Resin - 0.34%
- 707 Headband Wax - 0.30%
- Ghost OG x Blue Dream Shatter - 0.17%

## Cartridge

- Blissful Berry - 0.91%
- Sweet Dreams - 0.89%
- Uplifting Spearmint - 0.75%
- Citrus Anytime - 0.45%
- Autumn Maple - 0.11%



# Linalool

(Boiling Point 388 °F)

Linalool is a common ingredient in perfumes because of its pleasant floral aroma. It is naturally found in lavender, citrus, mint, cinnamon, and birch. It has especially helpful mental effects, helping with psychosis, reducing anxiety and stress, and making SSRI antidepressants more effective. It also reduces epileptic convulsions.

## Medicinal Effects

- Helps with psychosis
- Reduces anxiety
- Reduces stress
- Reduces epileptic convulsions

# Strains we carry

## Flower

- Purple Thai - 0.18%
- Sour Kush - 0.18%
- 707 Headband - 0.16%
- Ghost OG x Flo - 0.12%
- Las Vegas Purple Kush - 0.11%
- Gobstopper - 0.10%
- Harlequin - 0.10%
- Tangerine Haze - 0.09%
- Girl Scout Cookies - 0.07%
- #1024 - 0.07%
- Starry Night - 0.06%
- Gorilla Glue - 0.05%
- Ghost OG x Blue Dream - 0.04%
- Cherry Stomper - 0.02%

## Concentrate

- 707 Headband Wax - 1.1%
- Ghost Flo x Absolute Shatter - 0.97%
- 707 Headband Shatter - 0.56%
- Tangerine Haze Live Resin - 0.43%
- Ghost OG x Blue Dream Shatter - 0.22%
- Girl Scout Cookies Shatter - 0.17%
- Pineapple Live Resin - 0.11%

## Cartridge

- Uplifting Spearmint - 0.55%
- Caramel Apple - 0.53%
- Sweet Dreams - 0.37%
- Blissful Berry - 0.19%
- Citrus Anytime - 0.04%